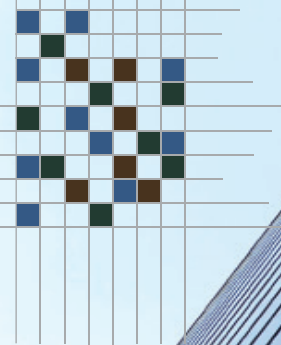


Agence

RVP  
S



Agency Inc.

Manufacturing Sales Agent  
[www.rsvpagency.com](http://www.rsvpagency.com)

T-F: (866) 730-7787

Richard Verdon - [richard@rsvpagency.com](mailto:richard@rsvpagency.com)  
Shawn Wessel - [shawn@rsvpagency.com](mailto:shawn@rsvpagency.com)

# Table of Contents

## **ARCHITECTURAL GLASS**

Trulite - Architectural Glass Products.....Pg.3

## **ARCHITECTURAL ALUMINUM**

Alumico - Architectural Aluminum Products.....Pg.4

Sunview - Sliding Patio Doors.....Pg.5

## **SEALANTS**

Dow Corning - Silicone Sealants & Elastometric Coating.....Pg.6

## **SPECIALTY ARCHITECTURAL GLASS**

Schott - Specialty Glass Products.....Pg.7-22

Dlubak Corporation - Specialty Armored Glass.....Pg.23

SaftiFirst - Fire Rated Glass, Door and Frames.....Pg.24

NGI - Custom Designer Glass.....Pg.25

Ornilux - Bird Protection Glass.....Pg.26

Ray-Bar - X Ray Glass.....Pg.27

Pittsburgh Corning - Glass Blocks, Fire Rated Glass Blocks.....Pg.28

View - Dynamic Glass.....Pg.29

## **SPECIALTY ARCHITECTURAL PRODUCTS**

Cascade - Glazing Material & Hardware.....Pg.30

CVLL Distribution - Polyprofiles Products & Glazing Materials.....Pg.31

Industrial Louvers.....Pg.32

## **SPECIALTY ARCHITECTURAL WALL PRODUCTS**

Office Drawing - Interior Glass Wall Partitions & Furniture.....Pg.33

Facade+ - Architectural Wall Systems.....Pg.34

Sentech - Structural Engineered Glass Systems.....Pg.35

## **SPECIALTY METAL PRODUCTS**

Burkes - Sheet Metal.....Pg.36

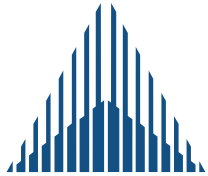
\*\*\*Direct link to each company's products are located at the bottom of each page.\*\*\*



## Trulite Architectural Glass

- Architectural Glass Products

- Insulated glass units
- Tempered
- Laminated
- Heavy glass
- Polishing
- Spandrel units ( Opaci-coat, frit)
- Silk screening
- Decorative Options



## Architectural Aluminum Products

- Miscellaneous extruded stock lengths
- Hardware
- Standard commercial doors (regular and thermally broken)
- Non insulated commercial sliding doors
- Store front framing (regular and insulated)
- High performance curtain wall in various sizes
- Standard commercial windows available in stock length or fabricated
- High performance european style windows and doors 68 STH series
- Available 68 STH series components in different frame thickness

- Perimeter and division frames
- Open out windows
- Open in windows
- Classic series framing
- Colonial window
- Heritage windows
- French doors
- Open in or out terrance doors
- Folding window/doors
- Tilt and slide window/door
- Lift and slide

**[www.alumico.com](http://www.alumico.com)**

\*\*\* All products are available in anodized finishes and standard or custom paint finishes (powder coat or liquid) \*\*\*



## Sliding Patio Doors

- Vinyl, composite and aluminum sliding patio doors
- Victorian
- Buckingham
- Embassy
- 1200 Series
- 2000 Series
- 4000 Series
- 2900 Series



***DOW CORNING***

## Silicone Sealants

- Silicone for waterproofing and glazing application ranging from 5yrs - 20yrs warranties
- Allguard silicone elastomeric coating
- 123 silicone seal for restroring, repaiirs, sealing, extreme movment in joints, available in various widths

### **Silicones vs. Urathanes**

- Silicones are not affected by UV light because it has no organic matter
- Urethanes degrade due to organic matter (carbon) = hardens, cracks, chalks, reverts
- Silicones can be applied at -29 celsius (no hot box needed)
- Silicone does not sag in high temperatures.



## Architectural Glass Products

### Amiran:

- Anti - Reflective
- Low iron glass
- Triple coated (Dipped) for durability
- 98% (vs. common float glass 91%) high light transmission
- Tempered or laminated for safety glass
- Reduced UV transmission (less fading)
- Eliminates glare (common for morning, afternoon and evening hours)
- Enhances displayed colours

- Store Fronts
- Stadiums
- Restaurants
- Observation Rooms
- Traffic Control Towers
- Televisions
- Museums , Zoo
- Special Exhibits and Displays



## Architectural Glass Products

### AGI Glass

- Integrated photovoltaic
- ASI Thru - semitransparent - used in double glazing, laminates
- ASI Opaque - where no vision is required - used for canopies and cladding

- Store fronts
- Solar electricity (at minimum of 10% of sun)
- Light management
- Comfort
- Effective shading (thermal mgmt.)
- Glare protection
- Innovative architecture
- Cost savings
- Minimizes heat gain (summer), thermal loss (winter) = building insulation

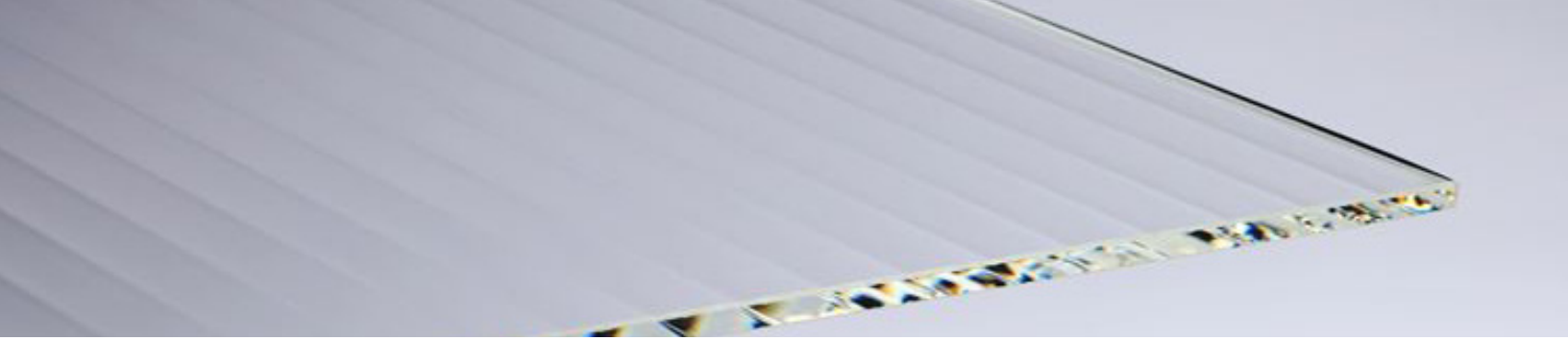




## Architectural Glass Products

### Artista

- Body tinted flat glass
- Textured on one side
- Fused in kiln to other flat glass
- Can be fused with float glass (machine drawn) or patterned glass (rolled flat glass)
- Available in a variety of colours, thicknesses and in frit



## Architectural Glass Products

### Rivuletta:

- Optically fluted glass
- Highly transparent
- Machine -Drawn
- Surface patterns of finely defined parallel lines (design orientated glass)
- Interior applications
- Available - laminated, tempered, IGU (4mm)

- Partitions
- Furniture
- Doors
- Showers



## Architectural Glass Products

### Imera:

- Coloured glass
- Non-textured flat glass
- Available - laminated, tempered (5,6,8 mm) , IGU
- Available in variety of thicknesses

- Partitions
- Furniture
- Doors
- Showers



## Architectural Glass Products

### Opalika:

- White flashed opal glass (Shadow Less Light)
- Partitions
- Distributes light evenly
- Comfortable environment
- Excellent colour rendering
- Backlighting
- Low profile lighting
- Scratch resistant
- Non-combustible
- Can be thermally tempered and shaped
- Available in a variety of thicknesses

3,180 mm x 1,770 mm ± 3.0 mm

Tolerance of thickness:		Tolerance of length and width:	
Thickness	Tolerance	Thickness	Tolerance
2.0 mm to 6.0 mm	$0$ $-0.2$ mm	2.0 mm to 8.0 mm	± 2.0 mm
8.0 mm to 10.0 mm	± 0.2 mm	10.0 mm to 12.0 mm	± 3.0 mm
10.0 mm to 12.0 mm	± 0.3 mm		

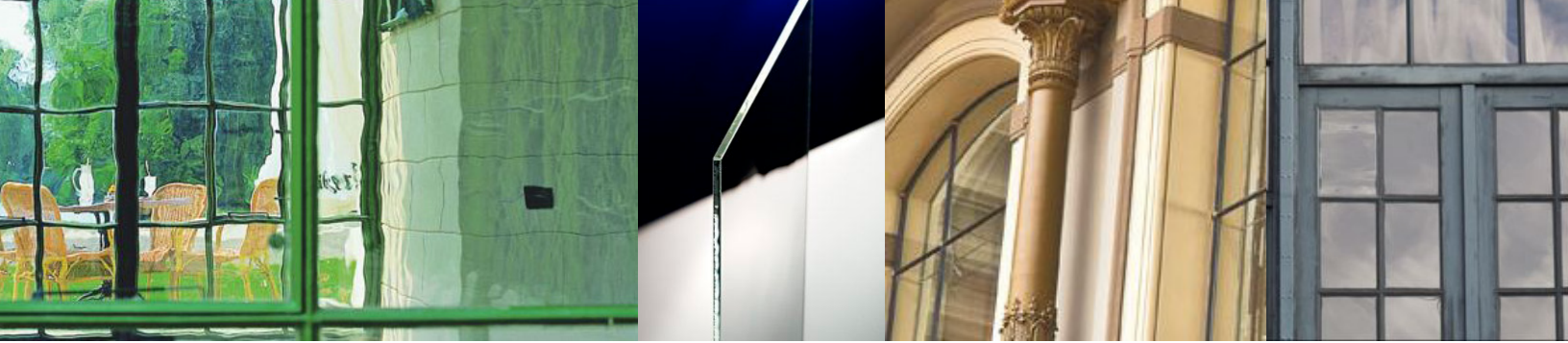
\* The technical data listed is only valid for MIRONA™ Float.



## Architectural Glass Products

### Mirona:

- Semi-transparent, silvery, transformation glass
  - Acts as mirror when not lit from background
  - Available in window glass, borosilicate heat resistant glass and gray glass
  - Can be tempered, low iron or made into laminated safety glass
- 
- Decorative cover for televisions or monitors
  - Display cases
  - Light fixtures



## Architectural Glass Products

### Restoration Glass:

- Highly transparent with slightly irregular surface structure
- Used for historical retrofit projects

### Goethe Glass:

- Historical glazing restoration
- Protects leaded glazing
- Provides stability to casements due to its thickness (4.5 mm)

### Restover:

- Historical glazing restoration
- Thinner glass than goethe
- Restover light also available with less irregular surface structure

### Tikana:

- Restoration glass developed for bauhaus style buildings



## Architectural Glass Products

### LightPoints - LED Glass:

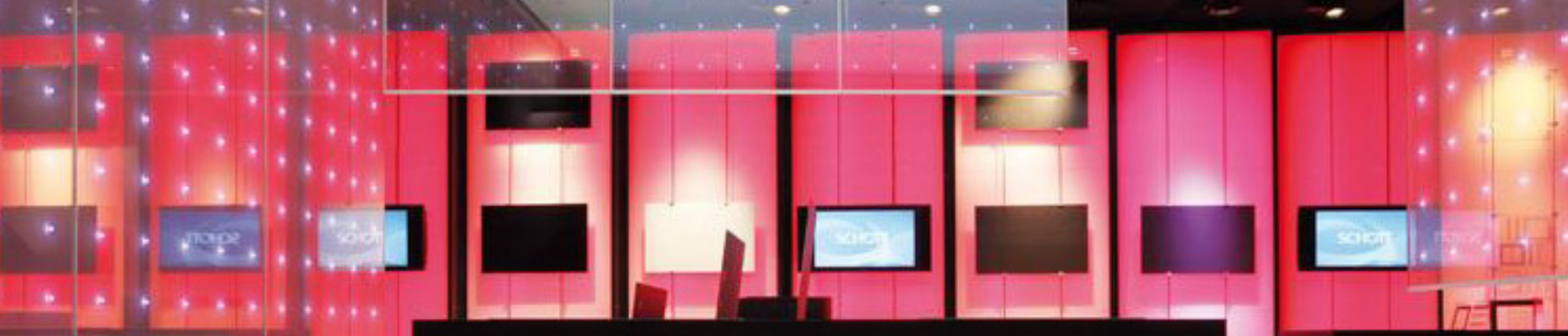
- Transparent flat glass with conductor plates
- Interior application

- Partitions
- No visible wires within laminated glass
- Balustrades
- Suspended LED Light Fixtures
- Decorative Glazed Walls
- Displayed Cases

### SpectraBar:

- LED light bar
- Slim design and profile
- High brightness and uniform lighting

- Display cases
- Retail and museum lighting



## Architectural Glass Products

### Smart Glass:

- Magira - Smartview is switchable glass that provides transparency or privacy/security at a touch of a button or flick of a switch.
- Magira - LightPoints in glass that combines the strong accent of colour-variable light diodes with modern glass technology and embedded LED lights in laminated glass.

- Restaurants
- Office walls and doors
- Shower doors
- Financial institutions
- Hospitals (ICU units, nurses stations) / psychiatric care facilities
- Correctional facilities / police stations





## Architectural Glass Products

### Okasolar:

- Insulating glass with fixed optical control louvers
- Balustrades
- Control of passive solar gain
- Reduced need for artificial light
- Maintenance free (hermetically sealed)



## Architectural Glass Products

### Okatech:

- Insulating glass with metal mesh interlayer
- Variety of types of mesh and colour
- Seasonal solar protection for places with widely varying angles of incidence
- Solar heating contributions in winter
- Thermal protection in summer



## Architectural Glass Products

### Okawood:

- Insulating glass with a wooden interlayer
- Solar protection
- Synthesis between classical and modern construction materials



## Architectural Glass Products

### Okacolour:

- Digitally printed glass
- Interior or exterior (tempered) applications
- In-organic pigments that are not fused into glass
- Okacolour design - special effects using colour and graphic images
- Okacolour ice - translucent colours or neutral matte finishes
- Okacolour vision - brilliant full-surface colour coating
- Okacolour solid - opaque coloured coatings



## Architectural Glass Products

### Okalux:

- Light diffusing insulating glass unit
  - Translucent capillary slab covered with glass fibre tissue
- 
- Uniform light diffusion and transmittance
  - Pools
  - Indoor sport arenas
  - UV protection
  - Excellent colour rendering
  - Sound insulation
  - Heat insulation



## Architectural Glass Products

### Narima:

- Di-chromic colour effects glass
  - Multiple ultra-thin-metal-oxide coatings for iridescent colour effects
  - Range of colours appear dependent on reflections, light conditions, angle of view and background
  - Interior or exterior applications
- 
- Balustrades
  - Monuments
  - IG Units
  - Display Cases
  - Balustrades



## Specialty Armoured Glass

- Blast resistant glass
- Bullet resistant glass
- Forced entry and detention glass
- Bent glass
- Military transparent armour glass
- Hurricane glass



## Fire Rated Glass

- Fire rated glass and frame & door systems

- Fire rated glass and frame systems
- Transparent wall from 45 to 120 minute rating
- Specialty tempered/ heat radiant
- Specialty fire protective
- Protective ceramics
- Protective safety wired
- Safti fire rated GPX fire resistive framing
- Fire rated doors
- Fire rated curtainwall
- Fire rated ballistics





## Custom Designer Glass

- Sublistyle & Sublicoat (digital imaging)
- Colour cote ( back colour painted )
- Polylam ( liquid resin laminate for glass, acrylic and polycarbonate )
- Microglass (composite glass for counter tops, interior / exterior walls, back splash and floor / wall tile)
- Designer and antique mirrors
- Laminated bent glass
- Custom glass advice
- Acid etching, sandblasting, polishing, water jetcutting, bevelling and V-grooving



## Ornilux Products

- Bird protection glass by Arnold Glas
- Multi-functional bird friendly glass available as laminated or double-glazed IGU.



## X Ray Glass

- Engineers, designers and manufactures of x-ray protection and radiation shielding materials
- 
- Wall systems
  - Shielded doors
  - X-Ray glass
  - Control window
  - Various other shielding materials



PITTSBURGH CORNING™

## Glass Blocks

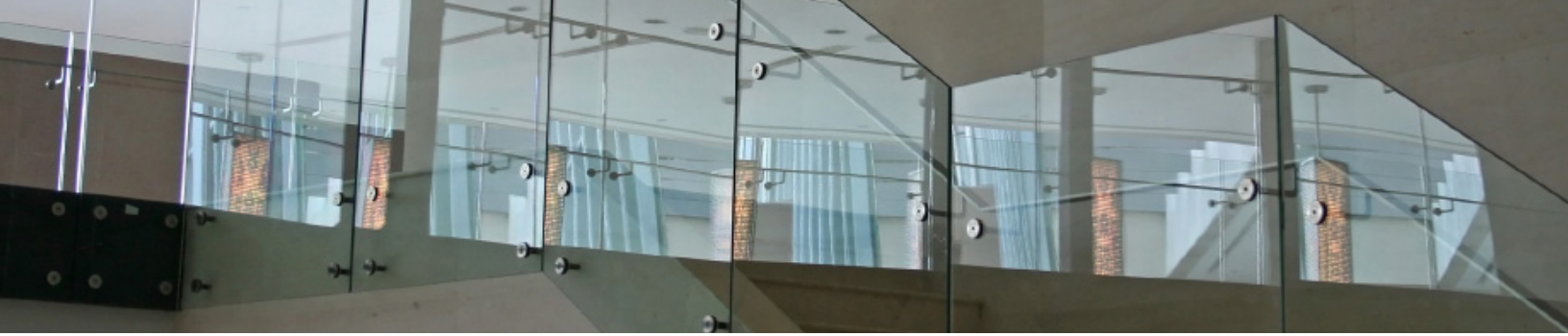
- Low E
- Blast resistant
- Ballistic resistant
- Hurricane resistant
- Tornado resistant
- Forced-entry resistant
- Detention & security
- Decorative glass blocks
- Energy efficient panels



## Dynamic Glass

- Dynamic glass is programmable and switches from clear to tinted on demand.
- Eliminates need for both interior and exterior blinds, provides significant cost savings, environmental benefits and quality of life enhancements.

- Electrochromatic glass, does not degrade due to UV light, and is the only technology in tintable glass to pass the ASTM test standard E2141-06 "standard test method for assessing durability of absorptive electrochromatic coatings on sealed insulating glass units, testing done at NREL, 50,000 cycles which is considered equal to 50 years assuming switching 3 times per day. contributes towards up to 21 LEED credits.
- Is bird friendly
- Is totally programmable and/or operable on demand
- Total cost has proven to be as low as \$0, as HVAC system size was able to be reduced sufficiently to cover entire cost of Soladigm windows
- Eliminates glare, solar heat gain
- Eliminates the need for exterior shading devices and internal blinds
- Typically can reduce peak cooling loads 25% - 30%
- Typically reduces building operating costs for lighting and cooling by 35%
- Can be triple glazed



## Glazing Materials & Hardware

- Architectural hardware for the glass industry



**CVLL Distribution**

**Polyprofiles Products**

- Polycarbonate profiles for the glazing industry ( stick profiles to join glass plates)

**Applications:**

- Interior partitions
- Exterior partitions
- Showers
- Store fronts
- Sizes: 3/8" , 1/2" , 3/4"
- Shapes: double U (butt-joint), two way (90 degree corner), three way (seamless office division)



## Industrial Louvers Products

- Louvers and vents
- Sun control devices
- Equipment screens
- Decorative grilles
- Column covers
- Product literature and forms
- Finishes

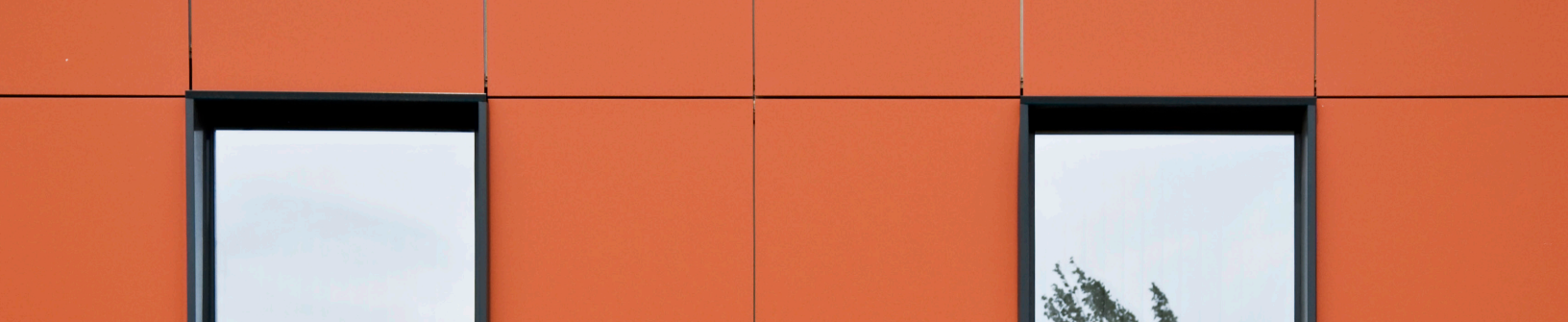




## Glass Wall Partitions & Furniture

- Italian moveable partition wall systems, office furniture and chairs including:

- DIVISION - single glazed
- DUO - double glazed
- OVERLINE - hard composite
- ENOSI - office furniture
- QUINTI - taylor made office chairs
- FORSIT - guest/office chairs & sofas
- ZAMAGNA - guest/office chairs & sofas



## Architectural Wall Systems

- Architectural composite panels
- Aluminum flat & profile panels
- Corrugated panels
- Steel panels



## Structural Engineered Glass Systems

- Structural glass systems for structural glazing, tension and clear-span structures including bullet resistant applications and blast-resistant façades.

- Fin walls
- Tension truss glass systems
- Tensegrity structures
- Point supported skylights
- Glass canopies
- Glass handrails and stairways
- Glass fin systems, cable trusses, steel support system, cable net systems ( blast and bullet resistant )
- Overhead structures , canopies, step-on glazing, staircases, pedestrian walkways, observation platforms, handrails



## Sheet Metal

- Back pans
- Break shapes